

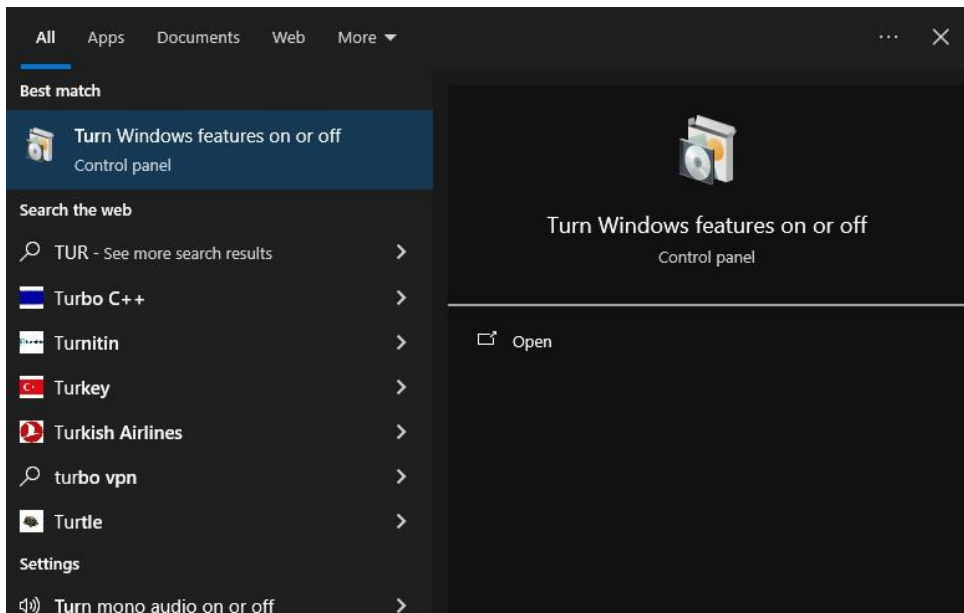
PRACTICAL 6

Aim: - Implementing Hypervisor

Requirements: - Hyper V manager

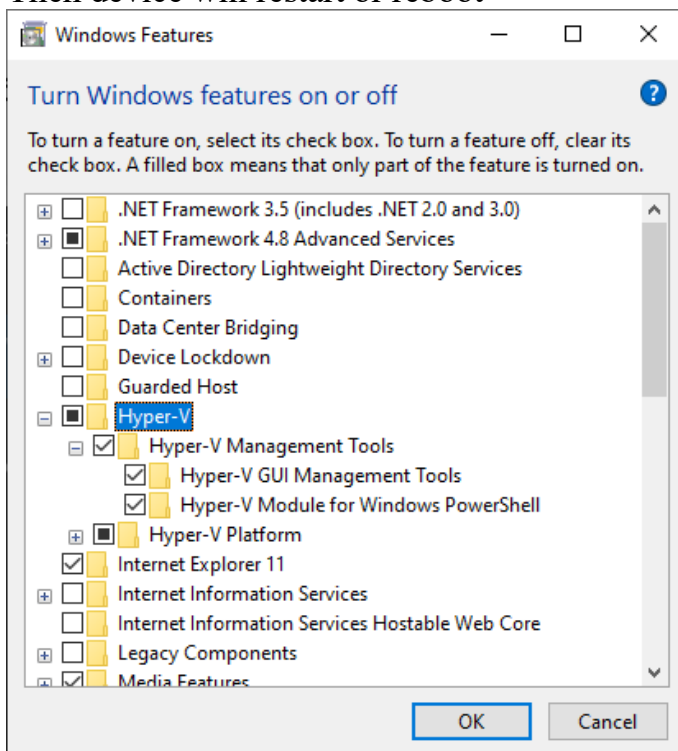
Steps: -

Step1: - Search for Turn Windows feature on or off.



Step2: - Now check the Hyper V option → Ok.

Then device will restart or reboot



← Windows Features

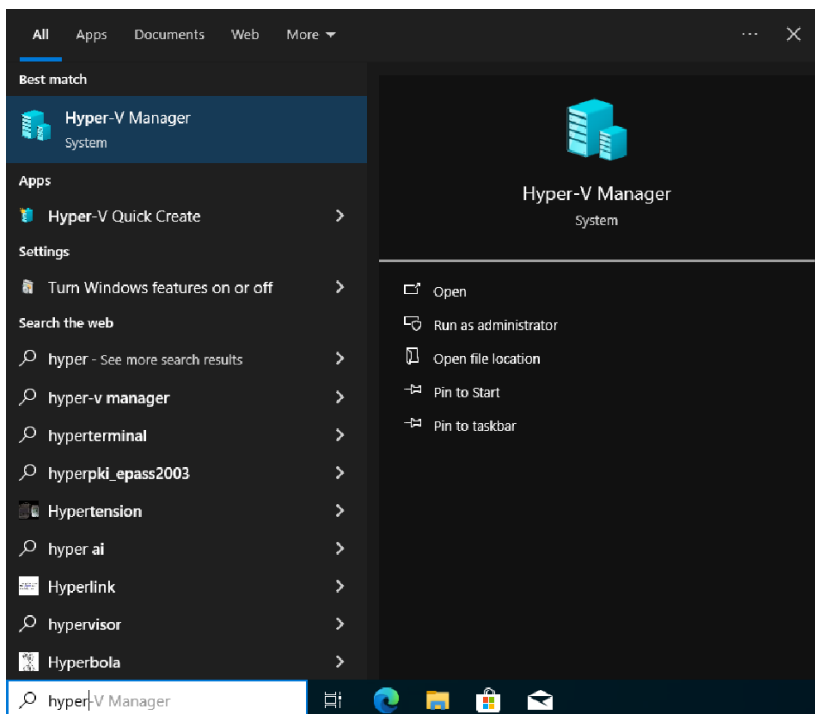
Windows completed the requested changes.

Windows needs to reboot your PC to finish installing the requested changes.

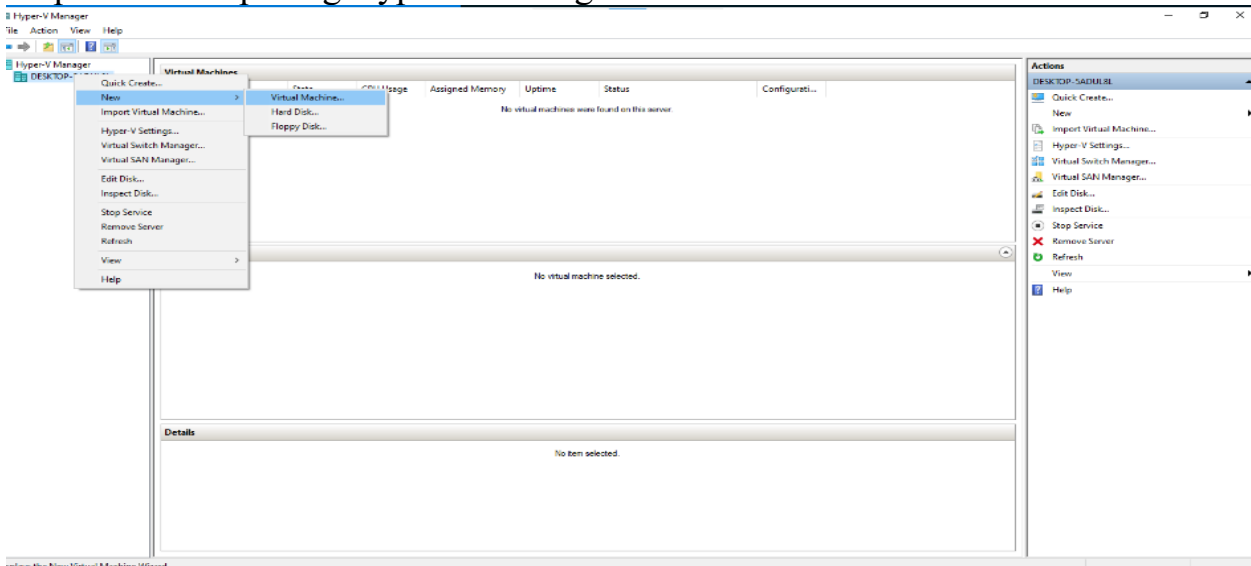
Restart now

Don't restart

Step3: - Now Open Hyper v manager



Step4: - After opening Hyper V Manager create new virtual machine.



Step5: - Click NEXT

New Virtual Machine Wizard

Before You Begin

This wizard helps you create a virtual machine. You can use virtual machines in place of physical computers for a variety of uses. You can use this wizard to configure the virtual machine now, and you can change the configuration later using Hyper-V Manager.

To create a virtual machine, do one of the following:

- Click Finish to create a virtual machine that is configured with default values.
- Click Next to create a virtual machine with a custom configuration.

☐ Do not show this page again

< Previous **Next >** Finish Cancel

Step6: - Name the machine as “NEW VIRTUAL MACHINE”

New Virtual Machine Wizard

Specify Name and Location

Choose a name and location for this virtual machine.

The name is displayed in Hyper-V Manager. We recommend that you use a name that helps you easily identify this virtual machine, such as the name of the guest operating system or workload.

Name:

You can create a folder or use an existing folder to store the virtual machine. If you don't select a folder, the virtual machine is stored in the default folder configured for this server.

☐ Store the virtual machine in a different location

Location:

! If you plan to take checkpoints of this virtual machine, select a location that has enough free space. Checkpoints include virtual machine data and may require a large amount of space.

< Previous **Next >** Finish Cancel

Step7: - Select Generation 1 and Click NEXT

New Virtual Machine Wizard

Specify Generation

Choose the generation of this virtual machine.

☒ **Generation 1**

This virtual machine generation supports 32-bit and 64-bit guest operating systems and provides virtual hardware which has been available in all previous versions of Hyper-V.

☐ **Generation 2**

This virtual machine generation provides support for newer virtualization features, has UEFI-based firmware, and requires a supported 64-bit guest operating system.

! Once a virtual machine has been created, you cannot change its generation.

[More about virtual machine generation support](#)

< Previous **Next >** Finish Cancel

Step8: - Startup memory: 1024 MB and Click NEXT

New Virtual Machine Wizard

Assign Memory

Before You Begin
Specify Name and Location
Specify Generation
Assign Memory
Configure Networking
Connect Virtual Hard Disk
Installation Options
Summary

Specify the amount of memory to allocate to this virtual machine. You can specify an amount from 32 MB through 251658240 MB. To improve performance, specify more than the minimum amount recommended for the operating system.

Startup memory: MB

☐ Use Dynamic Memory for this virtual machine.

i When you decide how much memory to assign to a virtual machine, consider how you intend to use the virtual machine and the operating system that it will run.

< Previous **Next >** Finish Cancel

Step9: - Keep the Default Setting of Configuration Networking.

New Virtual Machine Wizard

Configure Networking

Before You Begin
Specify Name and Location
Specify Generation
Assign Memory
Configure Networking
Connect Virtual Hard Disk
Installation Options
Summary

Each new virtual machine includes a network adapter. You can configure the network adapter to use a virtual switch, or it can remain disconnected.

Connection:

< Previous **Next >** Finish Cancel

Step10: - Select the “Create a virtual hard disk” and give it a name, location and set the size to 127GB then Click NEXT

New Virtual Machine Wizard

Connect Virtual Hard Disk

Before You Begin
Specify Name and Location
Specify Generation
Assign Memory
Configure Networking
Connect Virtual Hard Disk
Installation Options
Summary

A virtual machine requires storage so that you can install an operating system. You can specify the storage now or configure it later by modifying the virtual machine's properties.

☒ **Create a virtual hard disk**
Use this option to create a VHD or VHDX dynamically expanding virtual hard disk.

Name:

Location:

Size: GB (Maximum: 64 TB)

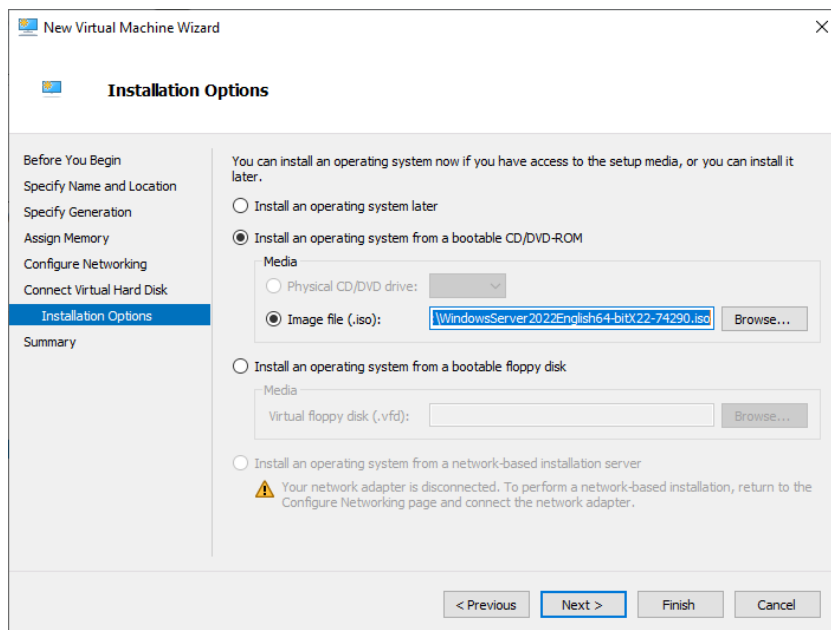
☐ Use an existing virtual hard disk
Use this option to attach an existing virtual hard disk, either VHD or VHDX format.

Location:

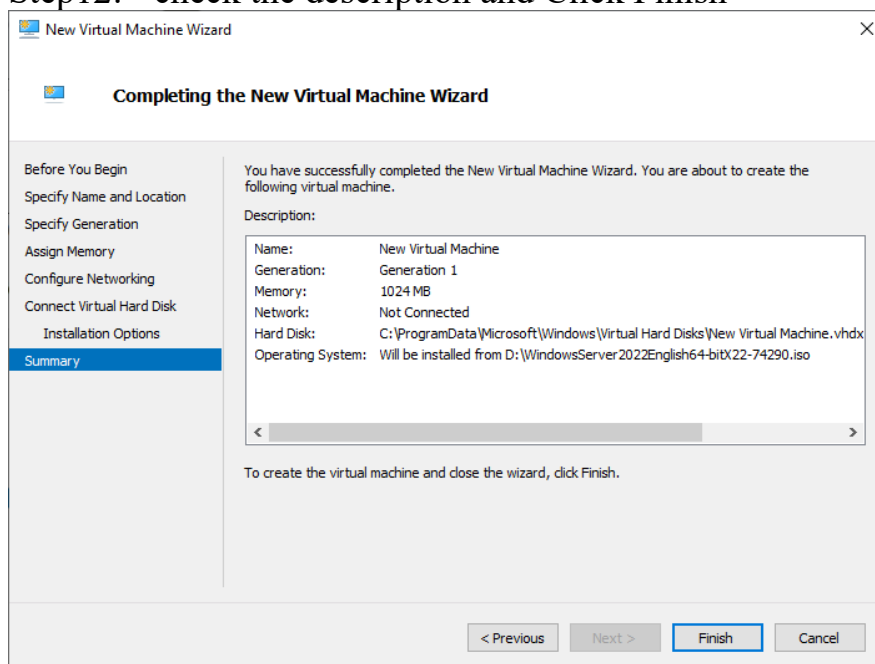
☐ Attach a virtual hard disk later
Use this option to skip this step now and attach an existing virtual hard disk later.

< Previous **Next >** Finish Cancel

Step11: - Now select the **Install an operating system from a bootable CD/DVD-ROM option, in this select **Image file(.ios)** and browse the **windowserver2022.ios** file then **Click NEXT****



Step12: - check the description and Click Finish



Step13: - power on the virtual machine

